



GHANA STATISTICAL SERVICE (GSS)
Statistics for Development and Progress

Statistical Bulletin

(PRODUCER PRICE INDEX PPI)
December, 2021

Ghana Statistical Service (GSS)

Statistical Bulletin

PRODUCER PRICE INDEX (PPI)

December, 2021

Date: January 19, 2022

Producer Price Index (PPI)
DECEMBER 2021

CONTENTS

HIGHLIGHTS FOR DECEMBER 2021	2
Table 1: Producer Price Index for December 2020 - December 2021	4
Table 2: Producer Price Index (Sep.2006=100) by sectors for December 2020 - December 2021	5
Table 3: Producer Price Index: Yearly Change Rates by Sector for December 2020 - December 2021 (%)	6
Table 4: Producer Price Index: Monthly Change Rates by Sector for December 2020 - December 2021 (%)	7
Table 5: Mining And Quarrying: Producer Price Index (Sept 2006=100) December 2020 - December 2021	8
Table 6: Mining and Quarrying: Yearly Change Rates for December 2020 - December 2021 (%)	9
Table 7: Mining and Quarrying: Monthly Change Rates for December 2020 - December 2021 (%)	10
Table 8: Manufacturing Producer Price Index (Sept 2006=100) for December 2020 - December 2021	11
Table 9: Manufacturing: Yearly Change Rates for December 2020 - December 2021 (%)	17
Table 10: Manufacturing: Monthly Change Rates for December 2020 - December 2021 (%)	23
Table 11: Utilities: Producer Price Index (Sept 2006=100) for December 2020 - December 2021	28
Table 12: Utilities: Yearly Change Rates for December 2020 - December 2021 (%)	29
Table 13: Utilities: Monthly Change Rates for December 2020 - December 2021 (%)	30

HIGHLIGHTS FOR DECEMBER 2021

Producer Price Inflation Rate in December 2021 is 12.8%

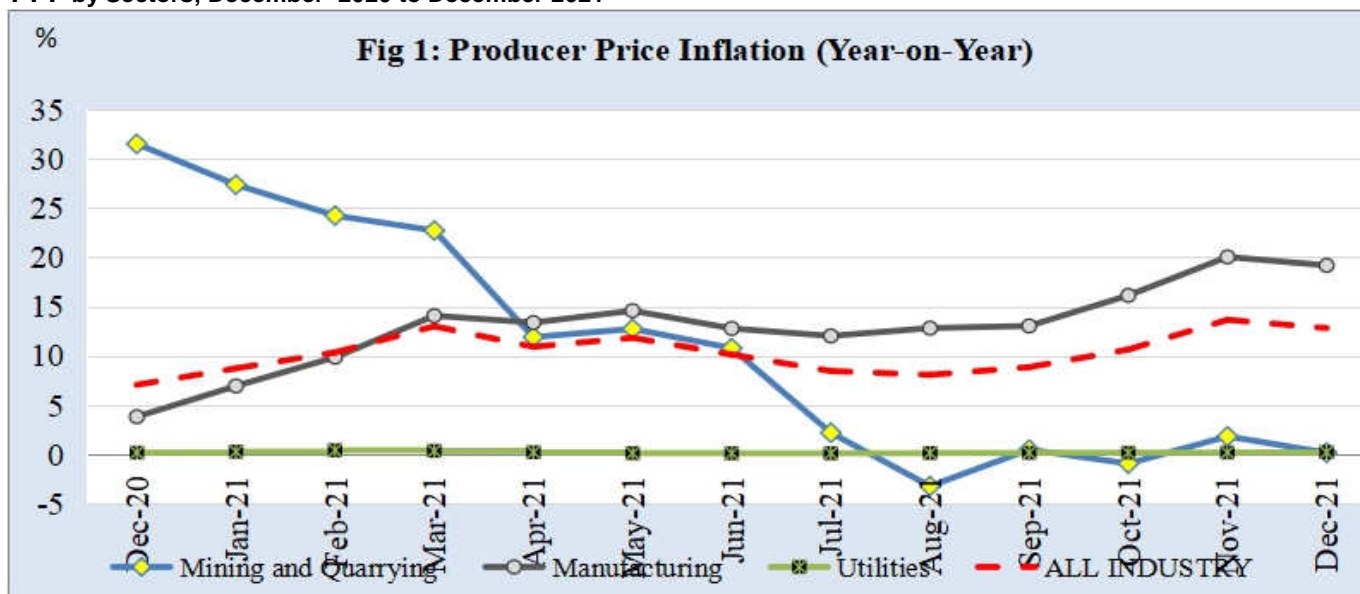
The Producer Price Index (PPI) measures the average change over time in the prices received by domestic producers for the production of their goods and services. The PPI for Ghana reports the producer price indices with reference to September 2006, the base period. This release shows the annual (year-on-year) and monthly producer inflation rates for all industry and three major sub-sectors of industry (Mining and Quarrying, Manufacturing and Utilities) for the last twelve months. The figures for the month of December 2021 are provisional, and are subject to revision when additional data become available. All other indicators are final.

The Producer Price Inflation rate for December 2021 was 12.8 percent. This rate indicates that between December 2020 and December 2021 (year-on-year), the PPI increased by 12.8 percent. This rate represents a 0.8 percentage point decrease in producer inflation relative to the rate recorded in November 2021 (13.6%). The month-on-month change in PPI between November 2021 and December 2021 was -0.2 percent.

The producer price inflation in the Mining and Quarrying sub-sector decreased by 1.7 percentage points over the November 2021 rate of 1.8 percent to record 0.1 percent in December 2021. The producer inflation for the Manufacturing sub-sector, which constitutes more than two-thirds of the total industry, decreased by 0.8 percentage points to record 19.2 percent. The utility sub-sector recorded a 0.2 percent inflation rate for December 2021.

In December 2021, two out of the sixteen major groups in the manufacturing sub-sector recorded inflation rates higher than the sector average of 19.2 percent. Manufacture of coke, refined petroleum products, and nuclear fuel recorded the highest inflation rate of 56.4 percent, while the Manufacture of motor vehicles, trailers, and semi-trailers recorded the least inflation rate of -3.5 percent

PPI by Sectors; December 2020 to December 2021



Manufacture of coke, refined petroleum products etc: Annual rate was 56.4 percent for December 2021, as compare to 58.4 percent in November 2021.

Manufacture of other non-metallic mineral product: Annual rate was 14.6 percent for December 2021, as compare to 14.5 percent in November 2021.

Manufacture of food products and beverages: Annual rate was 10.2 percent in December 2021, as compare to 12.2 percent in November 2021.

Electricity and Water Supply: the inflation rate was 0.2 percent in December 2021, same as that of the rate in November 2021.

More detailed time series data is posted on the GSS website [www.statsghana.gov.gh].

The next release date is 16th February 2022

Table 1: Producer Price Index for December 2020 - December 2021

Year / Month	Index level	Monthly	Yearly
	Sept 2006=100	Change Rate (%)	
December-20	724.9	0.6	7.0
January-21	747.7	3.1	8.7
February-21	747.3	-0.1	10.3
March-21	749.3	0.3	13.0
April-21	746.8	-0.3	10.9
May-21	761.7	2.0	11.8
June-21	769.7	1.1	10.1
July-21	770.6	0.1	8.4
August-21	774.8	0.5	8.1
September-21	781.9	0.9	8.8
October-21	797.2	2.0	10.6
November-21	819.1	2.8	13.6
December-21	p 817.7	p -0.2	p 12.8

p: provisional

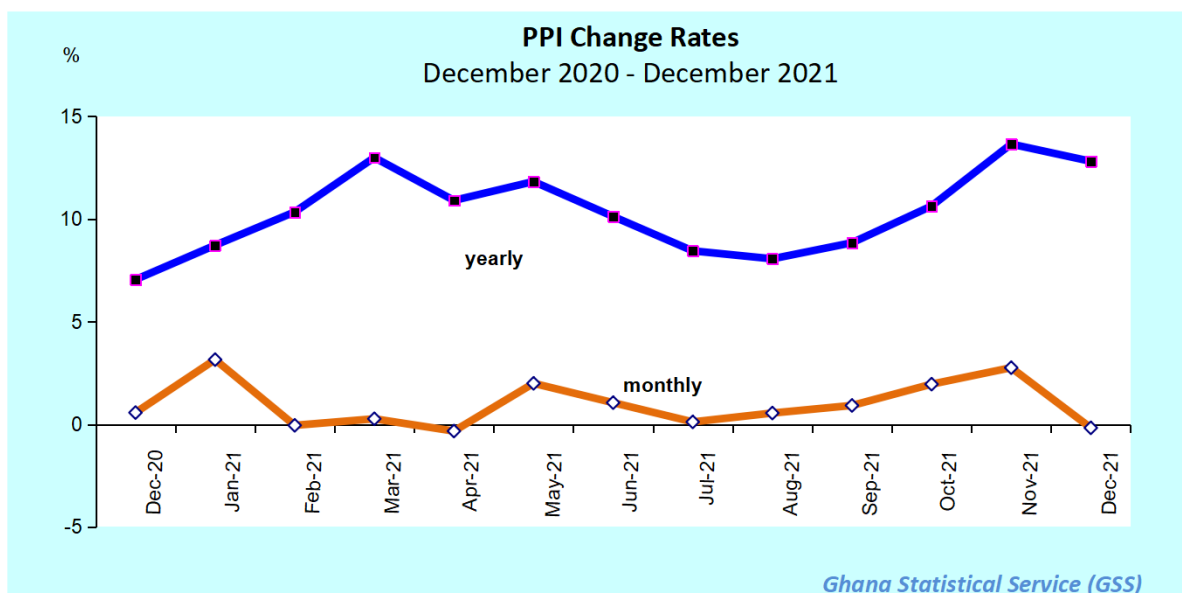


Table 2: Producer Price Index (Sep.2006=100) by sectors for December 2020 - December 2021

Year / Month	Mining and Quarrying	Manufacturing	Utilities	ALL INDUSTRY
<i>ISIC</i>	<i>C</i>	<i>D</i>	<i>E</i>	<i>C+D+E</i>
<i>weight</i>	13.97	69.75	16.28	100.00
December-2020	2,098.6	541.8	899.2	724.9
January-2021	2,101.5	566.7	899.5	747.7
February-2021	2,045.0	569.7	899.5	747.3
March-2021	2,013.8	574.0	899.2	749.3
April-2021	1,998.8	572.2	899.3	746.8
May-2021	2,082.5	583.5	899.3	761.7
June-2021	2,059.0	594.0	899.4	769.7
July-2021	2,058.5	595.0	899.7	770.6
August-2021	2,050.3	600.2	900.0	774.8
September-2021	2,073.1	606.7	900.2	781.9
October-2021	2,079.2	623.7	900.4	797.2
November-2021	2,118.1	646.2	900.6	819.1
December-2021	p 2,101.7	p 645.7	p 900.9	p 817.7

p: provisional

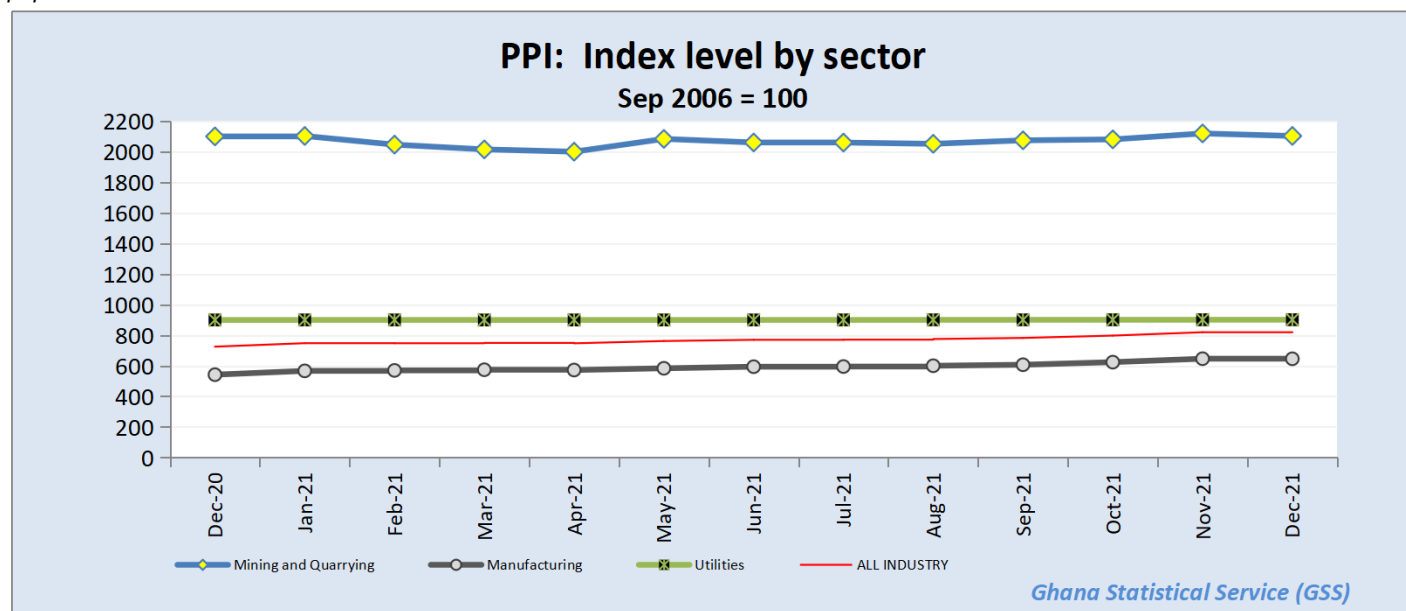


Table 3: Producer Price Index: Yearly Change Rates by Sector for December 2020 - December 2021 (%)

Year / Month	Mining and Quarrying	Manufacturing	Utilities	ALL INDUSTRY
	<i>C</i>	<i>D</i>	<i>E</i>	<i>C+D+E</i>
December-2020	31.5	3.8	0.2	7.0
January-2021	27.4	6.9	0.3	8.7
February-2021	24.2	9.8	0.4	10.3
March-2021	22.7	14.1	0.3	13.0
April-2021	11.9	13.4	0.2	10.9
May-2021	12.7	14.6	0.1	11.8
June-2021	10.8	12.8	0.1	10.1
July-2021	2.2	12.0	0.1	8.4
August-2021	-3.2	12.8	0.1	8.1
September-2021	0.5	13.0	0.1	8.8
October-2021	-1.0	16.1	0.2	10.6
November-2021	1.8	20.0	0.2	13.6
December-2021	p 0.1	p 19.2	p 0.2	p 12.8

p: provisional

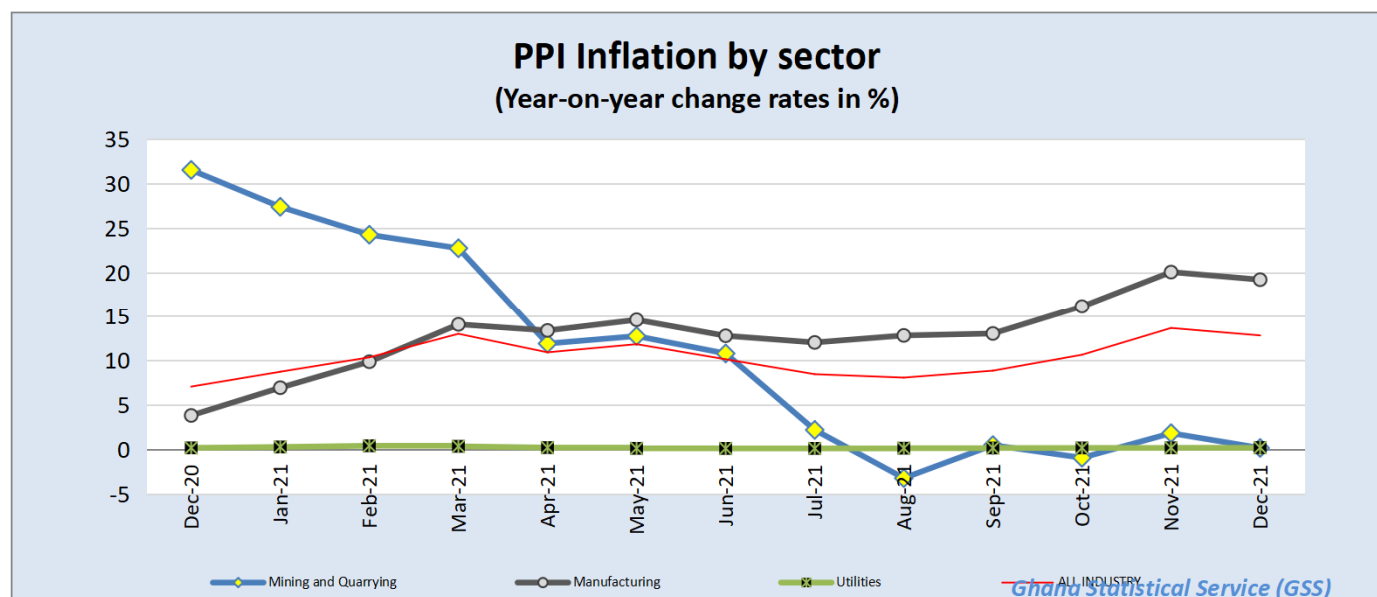


Table 4: Producer Price Index: Monthly Change Rates by Sector for December 2020 - December 2021 (%)

Year / Month	Mining and Quarrying	Manufacturing	Utilities	ALL INDUSTRY
<i>ISIC</i>	<i>C</i>	<i>D</i>	<i>E</i>	<i>C+D+E</i>
<i>weight</i>	13.97	69.75	16.28	100.00
December-2020	0.9	0.6	0.0	0.6
January-2021	0.1	4.6	0.0	3.1
February-2021	-2.7	0.5	-0.0	-0.1
March-2021	-1.5	0.7	-0.0	0.3
April-2021	-0.7	-0.3	0.0	-0.3
May-2021	4.2	2.0	0.0	2.0
June-2021	-1.1	1.8	0.0	1.1
July-2021	-0.0	0.2	0.0	0.1
August-2021	-0.4	0.9	0.0	0.5
September-2021	1.1	1.1	0.0	0.9
October-2021	0.3	2.8	0.0	2.0
November-2021	1.9	3.6	0.0	2.8
December-2021	p -0.8	p -0.1	p 0.0	p -0.2

p: provisional

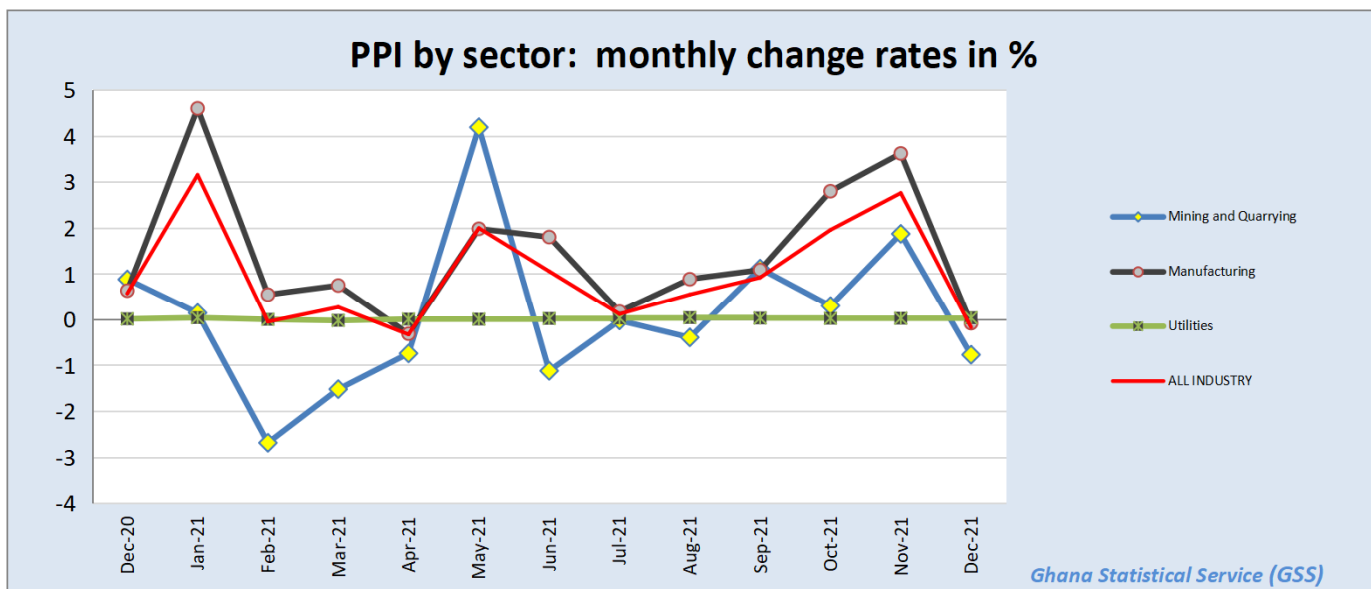


Table 5: Mining And Quarrying: Producer Price Index (Sept 2006=100) December 2020 - December 2021

Year / Month	Mining and Quarrying	Mining of metal ores	Mining of non-ferrous metal ores	Other mining and quarrying	Quarrying of stone, sand & clay	Mining and quarrying n.e.c.
ISIC	C	C13	C132	C14	C141	C142
December-2020	2098.6	2294.5	2294.5	227.5	184.4	519.3
January-2021	2101.5	2297.8	2297.8	227.5	184.4	519.3
February-2021	2045.0	2232.9	2232.9	229.0	185.9	519.3
March-2021	2013.8	2197.6	2197.6	229.0	185.9	519.3
April-2021	1998.8	2180.5	2180.5	229.0	185.9	519.3
May-2021	2082.5	2275.5	2275.5	229.0	185.9	519.3
June-2021	2059.0	2248.9	2248.9	229.0	185.9	519.3
July-2021	2058.5	2248.3	2248.3	229.0	185.9	519.3
August-2021	2050.3	2233.5	2233.5	243.5	199.3	534.8
September-2021	2073.1	2259.3	2259.3	243.5	199.3	534.8
October-2021	2079.2	2266.3	2266.3	243.5	199.3	534.8
November-2021	2118.1	2310.3	2310.3	243.5	199.3	534.8
December-2021	p 2101.7	p 2291.7	p 2291.7	p 243.5	p 199.3	p 534.8

p: provisional

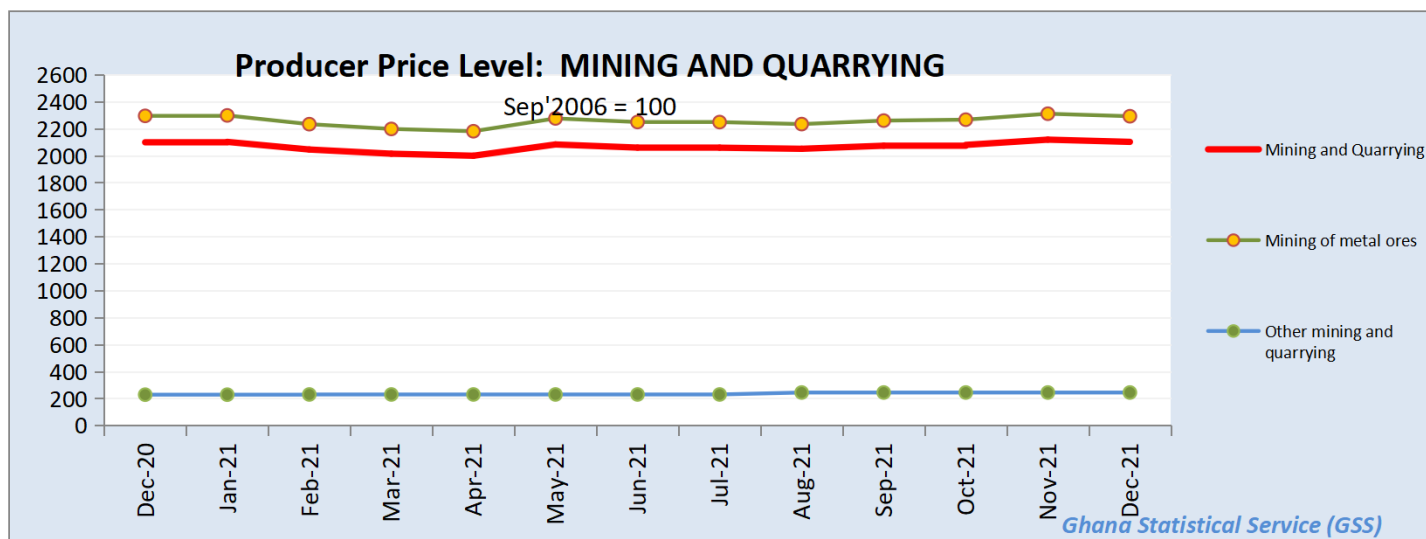


Table 6: Mining and Quarrying: Yearly Change Rates for December 2020 - December 2021 (%)

Year / Month	Mining and Quarrying	Mining of metal ores	Mining of non-ferrous metal ores	Other mining and quarrying	Quarrying of stone, sand & clay	Mining and quarrying n.e.c.
ISIC	C	C13	C132	C14	C141	C142
December-2020	31.5	33.0	33.0	0.0	0.0	0.0
January-2021	27.4	28.6	28.6	0.0	0.0	0.0
February-2021	24.2	25.3	25.3	0.7	0.8	0.0
March-2021	22.7	23.7	23.7	0.7	0.8	0.0
April-2021	11.9	12.4	12.4	0.7	0.8	0.0
May-2021	12.7	13.2	13.2	0.7	0.8	0.0
June-2021	9.5	9.9	9.9	0.7	0.8	0.0
July-2021	2.2	2.2	2.2	0.7	0.8	0.0
August-2021	-3.2	-3.6	-3.6	7.0	8.1	3.0
September-2021	0.5	0.2	0.2	7.0	8.1	3.0
October-2021	-1.0	-1.3	-1.3	7.0	8.1	3.0
November-2021	1.8	1.6	1.6	7.0	8.1	3.0
December-2021	p 0.1	-p 0.1	-p 0.1	p 7.0	p 8.1	p 3.0

p: provisional

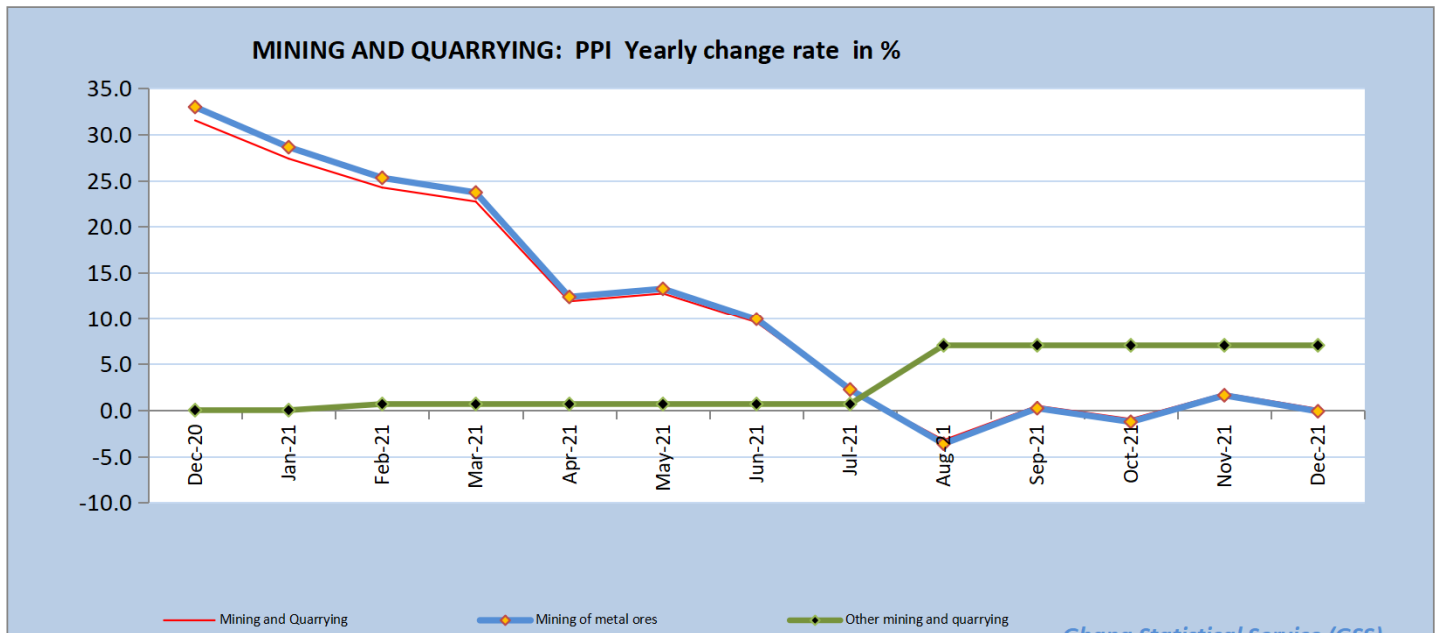


Table 7: Mining and Quarrying: Monthly Change Rates for December 2020 - December 2021 (%)

Year / Month	Mining and Quarrying	Mining of metal ores	Mining of non-ferrous metal ores	Other mining and quarrying	Quarrying of stone, sand & clay	Mining and quarrying n.e.c.
ISIC	C	C13	C132	C14	C141	C142
December-2020	0.9	0.9	0.9	0.0	0.0	0.0
January-2021	0.1	0.1	0.1	0.0	0.0	0.0
February-2021	-2.7	-2.8	-2.8	0.7	0.8	0.0
March-2021	-1.5	-1.6	-1.6	0.0	0.0	0.0
April-2021	-0.7	-0.8	-0.8	0.0	0.0	0.0
May-2021	4.2	4.4	4.4	0.0	0.0	0.0
June-2021	-1.1	-1.2	-1.2	0.0	0.0	0.0
July-2021	0.0	0.0	0.0	0.0	0.0	0.0
August-2021	-0.4	-0.7	-0.7	6.3	7.2	3.0
September-2021	1.1	1.2	1.2	0.0	0.0	0.0
October-2021	0.3	0.3	0.3	0.0	0.0	0.0
November-2021	1.9	1.9	1.9	0.0	0.0	0.0
December-2021	p -0.8	p -0.8	p -0.8	p 0.0	p 0.0	p 0.0

p: provisional

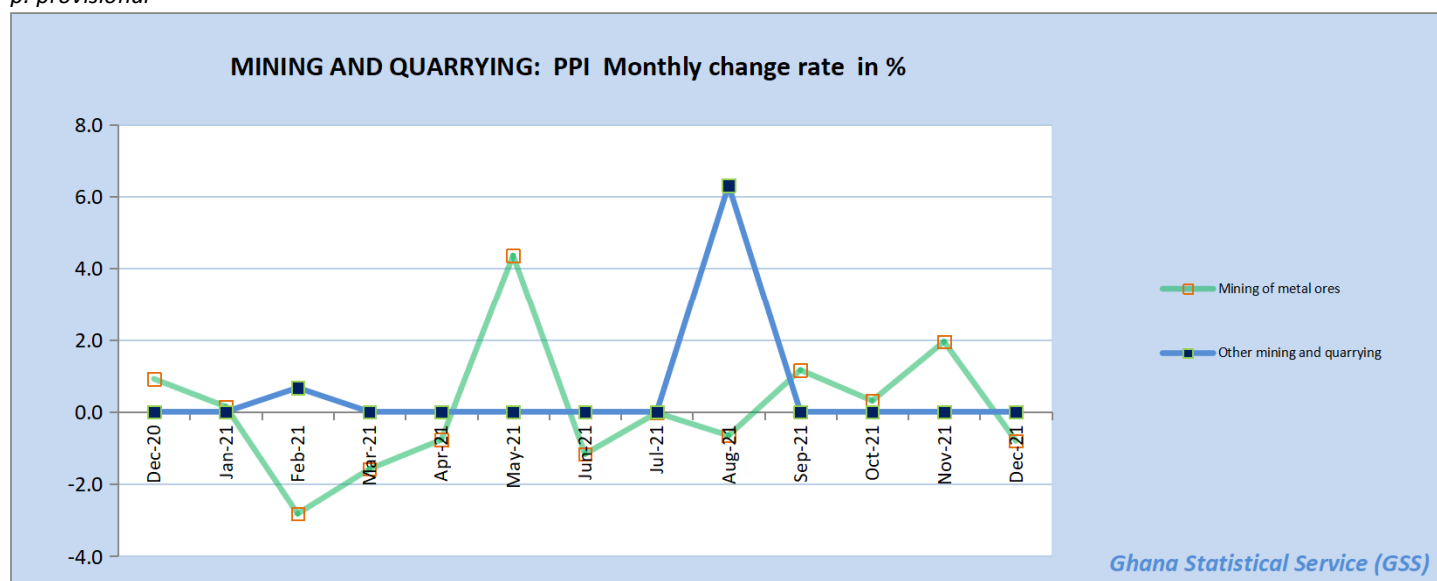


Table 8: Manufacturing Producer Price Index (Sept 2006=100) for December 2020 - December 2021

Year / Month	Manufacturing	Manufacture of food products and beverages	Production, processing, preservation of meat, fish, fruit, vegetables, oils and fats	Manufacture of dairy products	Manufacture of grain mill products, starch products, and prepared animal feeds	Manufacture of other food products	Manufacture of beverages	Manufacture of textiles	Spinning, weaving and finishing of textiles
ISIC	D	D15	D151	D152	D153	D154	D155	D17	D171
weight	100	25.64	4.60	4.31	4.66	4.80	7.27	4.27	4.28
December-2020	541.8	530.4	863.4	486.4	585.6	634.6	385.2	658.1	658.1
January-2021	566.7	533.8	899.7	486.4	585.6	635.8	385.2	658.3	658.3
February-2021	569.7	535.9	903.6	486.4	598.2	633.2	385.2	658.1	658.1
March-2021	574.0	535.5	899.8	486.4	598.2	632.3	385.2	657.3	657.3
April-2021	572.2	538.4	932.0	486.4	598.2	632.4	385.2	657.6	657.6
May-2021	583.5	563.5	1256.9	486.4	598.2	632.5	385.2	658.1	658.1
June-2021	594.0	563.8	1259.9	486.4	598.2	633.0	385.2	657.9	657.9
July-2021	595.0	561.4	1224.8	486.4	598.2	634.0	385.2	658.1	658.1
August-2021	600.2	562.3	1235.3	486.4	598.2	635.3	385.2	658.2	658.2
September-2021	606.7	565.4	1280.2	486.4	598.2	636.2	385.2	672.9	672.9
October-2021	623.7	579.2	1292.2	486.4	680.8	636.9	385.2	673.0	673.0
November-2021	646.2	581.6	1323.1	486.4	682.4	637.7	385.2	711.7	711.7
December-2021	p 645.7	p 584.5	p 1329.5	p 486.4	p 682.4	p 662.3	p 385.2	p 712.0	p 712.0

p: provisional

Table 8: Manufacturing Producer Price Index (Sept 2006=100) for December 2020 - December 2021

contd.

Year / Month	Tanning of leather; manu facture of luggage, etc	Manufacture of footwear	Manufacture of wood an of articles of straw etc.	Sawmilling and planing of wood	Manufacture of products of wood, cork, straw etc.	Manufacture of paper and paper products	Manufacture of paper and paper products	Publishing, printing and reproduction of rec. media	Publishing	Printing and service activities ...
<i>ISIC</i>	D19	<i>D192</i>	D20	<i>D201</i>	<i>D202</i>	D21	<i>D210</i>	D22	<i>D221</i>	<i>D222</i>
<i>weight</i>	0.12	<i>0.12</i>	9.03	<i>4.94</i>	<i>4.10</i>	0.62	<i>0.62</i>	1.14	<i>0.40</i>	<i>0.74</i>
December-2020	563.8	563.8	370.9	384.0	336.0	590.6	590.6	847.9	665.2	967.9
January-2021	563.8	563.8	370.9	384.0	336.1	591.0	591.0	847.9	665.2	967.9
February-2021	603.9	603.9	371.1	384.0	336.8	617.9	617.9	847.9	665.2	967.9
March-2021	605.0	605.0	372.1	384.0	340.2	617.6	617.6	847.9	665.2	967.9
April-2021	605.0	605.0	372.1	384.0	340.3	618.1	618.1	847.9	665.2	967.9
May-2021	605.0	605.0	372.2	384.0	340.6	619.0	619.0	847.9	665.2	967.9
June-2021	605.0	605.0	372.8	384.0	342.8	638.9	638.9	847.9	665.2	967.9
July-2021	605.0	605.0	372.7	384.0	342.5	639.3	639.3	847.9	665.2	967.9
August-2021	605.0	605.0	394.6	410.3	353.4	639.7	639.7	847.9	665.2	967.9
September-2021	640.5	640.5	403.5	418.7	363.6	640.3	640.3	847.9	665.2	967.9
October-2021	640.5	640.5	403.7	418.6	364.2	640.6	640.6	847.9	665.2	967.9
November-2021	640.5	640.5	403.8	418.6	364.7	681.4	681.4	847.9	665.2	967.9
December-2021	p 640.5	p 640.5	p 403.8	p 418.6	p 364.7	p 681.9	p 681.9	p 868.2	p 665.2	#####

p: provisional

Table 8: Manufacturing Producer Price Index (Sept 2006=100) for December 2020 - December 2021

contd.

Year / Month	Manufacture of coke, refined petroleum products etc.	Manufacture of refined petroleum products	Manufacture of chemicals and chemical products	Manufacture of basic chemicals	Manufacture of other chemical products	Manufacture of man-made fibres	Manufacture of rubber and plastics products	Manufacture of rubber products	Manufacture of plastics products
<i>ISIC</i>	D23	<i>D232</i>	D24	<i>D241</i>	<i>D242</i>	<i>D243</i>	D25	<i>D251</i>	<i>D252</i>
<i>weight</i>	22.94	22.94	10.15	0.54	9.45	0.16	3.90	0.76	3.14
December-2020	513.0	513.0	515.3	450.3	528.3	128.8	512.7	352.0	555.4
January-2021	594.6	594.6	515.3	451.9	528.3	128.8	513.2	353.4	555.6
February-2021	599.9	599.9	514.5	451.8	527.4	128.8	513.1	353.2	555.5
March-2021	604.0	604.0	515.3	450.6	528.3	128.8	507.4	331.6	555.4
April-2021	592.0	592.0	515.3	450.7	528.3	128.8	507.4	331.7	555.4
May-2021	599.3	599.3	515.3	450.8	528.3	128.8	507.4	331.8	555.4
June-2021	635.0	635.0	515.3	451.6	528.3	128.8	548.4	351.7	602.8
July-2021	642.1	642.1	515.3	452.8	528.3	128.8	548.8	352.8	603.0
August-2021	642.5	642.5	517.6	454.5	530.7	128.8	549.6	355.3	603.2
September-2021	653.1	653.1	523.7	482.0	536.7	128.8	550.0	356.3	603.3
October-2021	709.0	709.0	523.7	483.1	536.7	128.8	550.3	357.2	603.4
November-2021	812.6	812.6	523.7	484.1	536.7	128.8	551.4	360.9	603.5
December-2021	p 802.2	p 802.2	p 523.8	p 485.8	p 536.7	p 128.8	p 551.9	p 362.2	p 603.7

p: provisional

Table 8: Manufacturing Producer Price Index (Sept 2006=100) for December 2020 - December 2021
contd.

Year / Month	Manufacture of other non-metallic min. products	Manufacture of non-metallic mineral products n.e.c.	Manufacture of basic metals	Manufacture of basic iron and steel	Manufacture of basic precious and non-ferrous metals	Manufacture of fabricated metal products, ...	Manufacture of structural metal products, tanks, reservoirs ...	Manufacture of other fabricated metal products ...	Manufacture of machinery ... n.e.c.	Manufacture of special-purpose machinery
<i>ISIC</i>	D26	<i>D269</i>	D27	<i>D271</i>	<i>D272</i>	D28	<i>D281</i>	<i>D289</i>	D29	<i>D292</i>
<i>weight</i>	8.20	8.20	5.02	2.02	2.65	3.70	1.55	2.15	0.42	0.42
December-2020	608.6	608.6	548.9	626.6	496.2	755.0	581.3	910.9	1328.8	1328.8
January-2021	649.9	649.9	558.4	649.9	497.4	755.4	581.3	911.6	1328.8	1328.8
February-2021	651.8	651.8	558.3	649.9	497.3	766.5	602.0	911.5	1328.8	1328.8
March-2021	662.9	662.9	608.9	796.1	496.4	769.8	608.6	911.0	1328.8	1328.8
April-2021	662.9	662.9	608.9	796.1	496.5	769.8	608.6	911.1	1328.8	1328.8
May-2021	663.0	663.0	653.7	937.8	496.6	787.8	608.6	947.9	1469.3	1469.3
June-2021	664.0	664.0	654.2	937.9	497.2	793.9	608.6	960.7	1469.3	1469.3
July-2021	664.2	664.2	655.0	938.2	498.2	795.0	608.6	962.9	1469.3	1469.3
August-2021	675.1	675.1	656.1	938.6	499.5	818.5	646.2	969.8	1469.3	1469.3
September-2021	685.9	685.9	656.9	938.8	500.5	819.0	646.2	970.7	1469.3	1469.3
October-2021	696.3	696.3	657.5	939.1	501.2	819.2	646.2	971.1	1469.3	1469.3
November-2021	696.7	696.7	658.2	939.3	502.0	819.6	646.5	971.6	1469.3	1469.3
December-2021	p 697.3	p 697.3	p 659.2	p 939.6	p 503.2	p 820.7	p 646.5	p 973.8	p 1469.3	p 1469.3

p: provisional

Table 8: Manufacturing Producer Price Index (Sept 2006=100) for December 2020 - December 2021

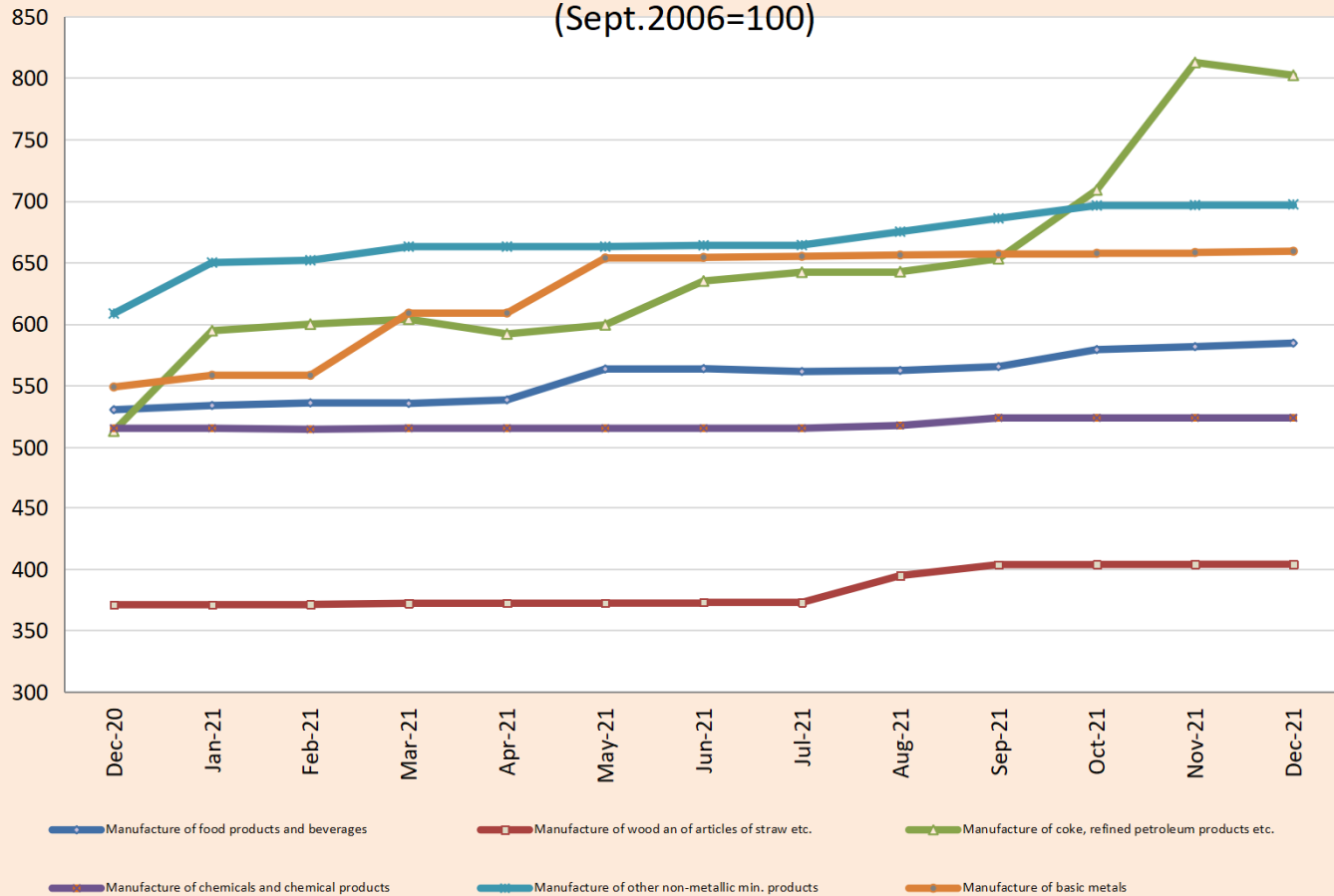
contd.

Year / Month	Manufacture of electrical machinery and apparatus n.e.c.	Manufacture of insulated wire and cable	Manufacture of motor vehicles, trailers and semi-trailers	Manufacture of bodies for motor vehicles, trailers and semi-trailers	Manufacture of furniture; manufacturing n.e.c.	Manufacture of furniture	Manufacturing n.e.c.
<i>ISIC</i>	<i>D31</i>	<i>D313</i>	<i>D34</i>	<i>D342</i>	<i>D36</i>	<i>D361</i>	<i>D369</i>
<i>weight</i>	0.41	0.41	0.05	0.05	2.44	2.33	0.11
December-2020	399.3	399.3	809.1	809.1	786.3	781.1	988.6
January-2021	399.3	399.3	813.7	813.7	786.3	781.1	988.6
February-2021	399.3	399.3	808.8	808.8	822.2	817.6	997.2
March-2021	399.3	399.3	791.5	791.5	822.2	817.6	997.2
April-2021	399.3	399.3	797.7	797.7	822.2	817.6	997.2
May-2021	399.3	399.3	809.7	809.7	822.2	817.6	997.2
June-2021	399.3	399.3	805.1	805.1	824.7	820.1	997.2
July-2021	399.3	399.3	794.7	794.7	824.7	820.1	997.2
August-2021	422.9	422.9	796.1	796.1	851.4	847.3	1005.1
September-2021	422.9	422.9	803.6	803.6	851.6	847.3	1015.5
October-2021	422.9	422.9	792.4	792.4	851.6	847.3	1015.5
November-2021	422.9	422.9	783.0	783.0	851.6	847.3	1015.5
December-2021	p 422.9	p 422.9	p 780.9	p 780.9	p 859.2	p 855.0	p 1015.5

p: provisional

PPI for Selected Subgroups in the Manufacturing Sector

(Sept.2006=100)



Ghana Statistical Service (GSS)

Table 9: Manufacturing: Yearly Change Rates for December 2020 - December 2021 (%)

Year / Month	Manufacturing	Manufacture of food products and beverages	Production, processing, preservation of meat, fish, fruit, vegetables, oils and fats	Manufacture of dairy products	Manufacture of grain mill products, starch products, and prepared animal feeds	Manufacture of other food products	Manufacture of beverages	Manufacture of textiles	Spinning, weaving and finishing of textiles
<i>ISIC</i>	D	D15	<i>D151</i>	<i>D152</i>	<i>D153</i>	<i>D154</i>	<i>D155</i>	D17	<i>D171</i>
<i>weight</i>	100	25.64	4.60	4.31	4.66	4.80	7.27	4.27	4.28
December-2020	3.8	4.8	12.6	5.6	0.9	4.2	2.7	6.3	6.3
January-2021	6.9	5.4	16.2	5.6	0.9	4.8	2.7	6.4	6.4
February-2021	9.8	6.9	24.3	5.6	3.1	5.1	2.7	6.7	6.7
March-2021	14.1	6.6	22.2	5.6	3.1	4.8	2.7	6.4	6.4
April-2021	13.4	6.6	22.7	5.6	3.1	3.9	2.7	6.0	6.0
May-2021	14.6	10.5	62.5	5.6	3.1	3.5	0.3	5.9	5.9
June-2021	12.8	11.2	71.0	5.6	2.4	3.4	0.3	4.8	4.8
July-2021	12.0	10.2	62.2	5.6	2.4	3.4	0.0	0.5	0.5
August-2021	12.8	10.2	62.0	5.6	2.4	3.0	0.0	0.3	0.3
September-2021	13.0	9.9	59.4	5.6	2.4	3.2	0.0	2.5	2.5
October-2021	16.1	12.5	60.4	5.6	16.6	3.2	0.0	2.5	2.5
November-2021	20.0	12.2	57.1	5.6	16.8	3.3	0.0	8.2	8.2
December-2021	p 19.2	p 10.2	p 54.0	p 0.0	p 16.5	p 4.4	p 0.0	p 8.2	p 8.2

p: provisional

Table 9: Manufacturing: Yearly Change Rates for December 2020 - December 2021 (%)

contd.

Year / Month	Tanning of leather; manufacture of luggage, etc	Manufacture of footwear	Manufacture of wood and of articles of straw etc.	Sawmilling and planing of wood	Manufacture of products of wood, cork, straw etc.	Manufacture of paper and paper products	Manufacture of paper and paper products	Publishing, printing and reproduction of rec. media	Publishing	Printing and service activities ...
<i>ISIC</i>	D19	<i>D192</i>	D20	<i>D201</i>	<i>D202</i>	D21	<i>D210</i>	D22	<i>D221</i>	<i>D222</i>
<i>weight</i>	0.12	<i>0.12</i>	9.03	<i>4.94</i>	<i>4.10</i>	0.62	<i>0.62</i>	1.14	<i>0.40</i>	<i>0.74</i>
December-2020	3.5	3.5	3.7	2.1	8.5	4.6	4.6	6.8	0.0	10.7
January-2021	3.5	3.5	3.8	2.1	8.6	4.9	4.9	6.8	0.0	10.7
February-2021	10.5	10.5	3.9	2.1	9.1	9.9	9.9	6.8	0.0	10.7
March-2021	10.7	10.7	4.1	2.1	10.0	9.8	9.8	6.8	0.0	10.7
April-2021	10.7	10.7	4.1	2.1	10.1	9.6	9.6	6.8	0.0	10.7
May-2021	10.0	10.0	1.8	0.0	7.2	9.3	9.3	6.8	0.0	10.7
June-2021	10.0	10.0	1.9	0.0	7.6	12.8	12.8	6.8	0.0	10.7
July-2021	10.0	10.0	1.9	0.0	7.4	12.8	12.8	6.8	0.0	10.7
August-2021	10.0	10.0	7.9	6.8	10.8	12.8	12.8	6.8	0.0	10.7
September-2021	13.6	13.6	9.1	9.0	9.4	12.9	12.9	0.0	0.0	0.0
October-2021	13.6	13.6	9.2	9.0	9.6	8.9	8.9	0.0	0.0	0.0
November-2021	13.6	13.6	8.9	9.0	8.7	15.7	15.7	0.0	0.0	0.0
December-2021	p 13.6	p 13.6	p 8.9	p 9.0	p 8.5	p 15.4	p 15.4	p 2.4	p 0.0	p 3.7

p: provisional

Table 9: Manufacturing: Yearly Change Rates for December 2020 - December 2021 (%)

contd.

Year / Month	Manufacture of coke, refined petroleum products etc.	Manufacture of refined petroleum products	Manufacture of chemicals and chemical products	Manufacture of basic chemicals	Manufacture of other chemical products	Manufacture of man-made fibres	Manufacture of rubber and plastic products	Manufacture of rubber products	Manufacture of plastics products
<i>ISIC</i>	D23	D232	D24	D241	D242	D243	D25	D251	D252
<i>weight</i>	22.94	22.94	10.15	0.54	9.45	0.16	3.90	0.76	3.14
December-2020	-4.0	-4.0	5.0	1.7	5.2	0.0	16.1	2.7	19.1
V January-2021	4.4	4.4	5.0	2.7	5.2	0.0	16.4	3.9	19.2
February-2021	13.7	13.7	4.9	4.1	5.0	0.0	16.8	5.5	19.4
March-2021	31.0	31.0	5.0	3.5	5.2	0.0	15.2	-2.2	19.3
April-2021	28.0	28.0	5.0	2.0	5.2	0.0	14.8	-3.8	19.1
May-2021	29.4	29.4	5.0	1.1	5.2	0.0	14.5	-4.7	19.1
June-2021	23.9	23.9	5.0	1.0	5.2	0.0	16.7	0.7	20.5
July-2021	25.2	25.2	4.7	1.0	4.8	0.0	7.2	0.7	8.6
August-2021	25.3	25.3	5.2	1.3	5.3	0.0	7.3	1.3	8.6
September-2021	27.4	27.4	1.6	7.4	1.6	0.0	7.4	1.6	8.6
October-2021	38.2	38.2	1.6	7.4	1.6	0.0	7.4	1.7	8.7
November-2021	58.4	58.4	1.6	7.6	1.6	0.0	7.3	0.9	8.7
December-2021	p 56.4	p 56.4	p 1.6	p 7.9	p 1.6	p 0.0	p 7.7	p 2.9	p 8.7

p: provisional

Table 9: Manufacturing: Yearly Change Rates for December 2020 - December 2021 (%)
contd.

Year / Month	Manufacture of other non-metallic min. products	Manufacture of non-metallic mineral products n.e.c.	Manufacture of basic metals	Manufacture of basic iron and steel	Manufacture of basic precious and non-ferrous metals	Manufacture of fabricated metal products, ...	Manufacture of structural metal products, tanks, reservoirs ...	Manufacture of other fabricated metal products ...	Manufacture of machinery ... n.e.c.	Manufacture of special-purpose machinery
ISIC	D26	D269	D27	D271	D272	D28	D281	D289	D29	D292
weight	8.20	8.20	5.02	2.02	2.65	3.70	1.55	2.15	0.42	0.42
December-2020	10.9	10.9	3.4	4.5	2.5	2.4	1.6	2.7	0.0	0.0
January-2021	18.5	18.5	5.5	8.4	3.3	2.0	1.6	2.4	0.0	0.0
February-2021	19.1	19.1	6.1	8.5	4.3	3.6	5.2	2.4	0.0	0.0
March-2021	20.9	20.9	15.5	32.8	3.8	4.0	6.4	2.3	0.0	0.0
April-2021	20.9	20.9	14.7	32.6	2.8	3.8	6.4	2.0	0.0	0.0
May-2021	18.1	18.1	22.7	56.0	2.1	6.0	6.1	5.9	10.6	10.6
June-2021	10.0	10.0	22.6	56.0	2.0	6.8	6.1	7.3	10.6	10.6
July-2021	9.3	9.3	21.7	56.0	0.7	6.9	6.1	7.5	10.6	10.6
August-2021	11.1	11.1	19.8	50.0	0.9	9.4	12.7	7.2	10.6	10.6
September-2021	12.7	12.7	19.8	49.9	1.1	8.5	11.2	6.6	10.6	10.6
October-2021	14.4	14.4	19.9	49.9	1.1	8.5	11.2	6.7	10.6	10.6
November-2021	14.5	14.5	19.9	49.7	1.2	8.4	11.2	6.3	10.6	10.6
December-2021	p 14.6	p 14.6	p 20.1	p 50.0	p 1.4	p 8.7	p 11.2	p 6.9	p 10.6	p 10.6

p: provisional

Table 9: Manufacturing: Yearly Change Rates for December 2020 - December 2021 (%)

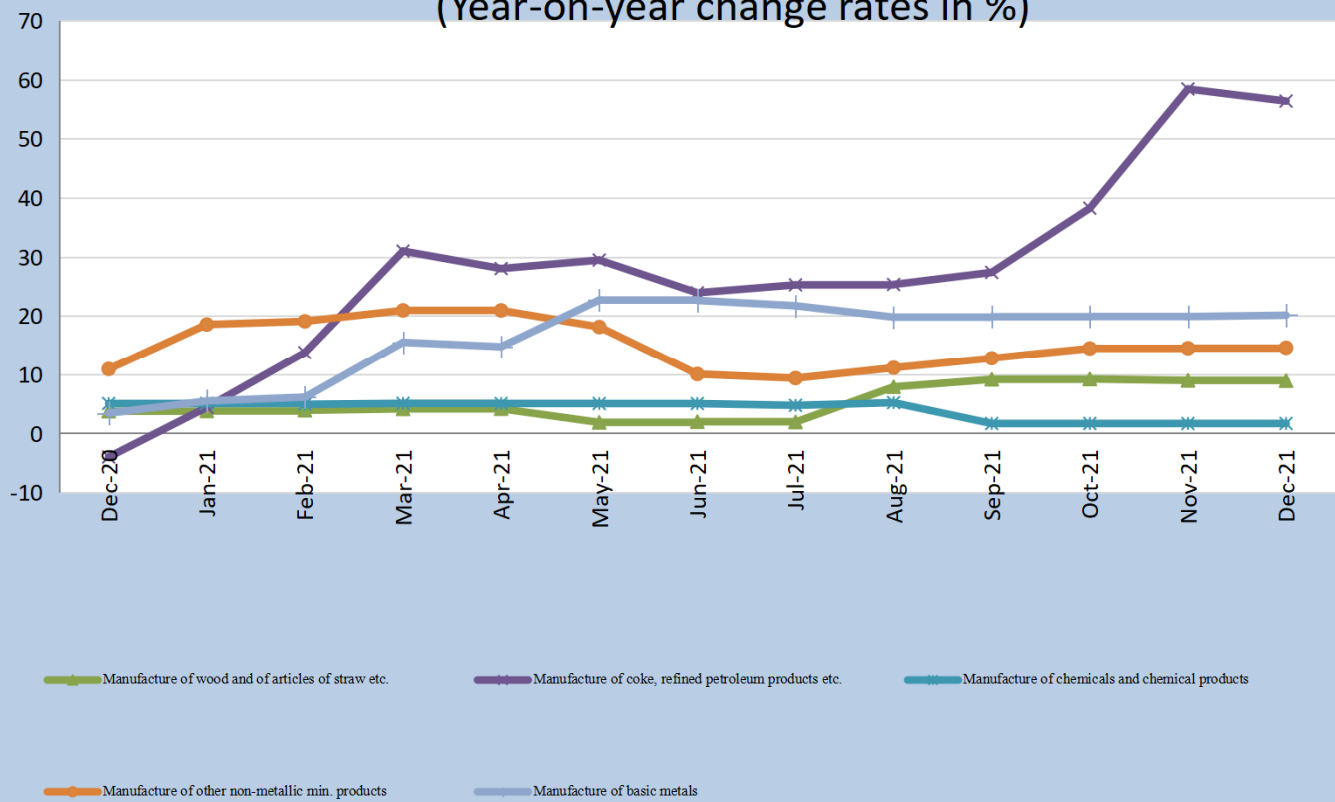
contd.

Year / Month	Manufacture of electrical machinery and apparatus n.e.c.	Manufacture of insulated wire and cable	Manufacture of motor vehicles, trailers and semi-trailers	Manufacture of bodies for motor vehicles, trailers and semi-trailers	Manufacture of furniture; manufacturing n.e.c.	Manufacture of furniture	Manufacturing n.e.c.
<i>ISIC</i>	D31	<i>D313</i>	D34	<i>D342</i>	D36	<i>D361</i>	<i>D369</i>
<i>weight</i>	0.41	<i>0.41</i>	0.05	<i>0.05</i>	2.44	<i>2.33</i>	<i>0.11</i>
December-2020	0.0	0.0	34.5	34.5	8.1	7.8	20.8
January-2021	0.0	0.0	37.7	37.7	6.6	6.2	20.8
February-2021	0.1	0.1	40.6	40.6	11.5	11.2	21.9
March-2021	0.0	0.0	35.1	35.1	11.5	11.2	21.9
April-2021	0.0	0.0	37.3	37.3	11.5	11.2	21.9
May-2021	0.0	0.0	33.6	33.6	5.9	5.5	21.2
June-2021	0.0	0.0	28.4	28.4	6.2	5.8	21.2
July-2021	0.0	0.0	23.9	23.9	5.8	5.4	21.2
August-2021	5.9	5.9	20.0	20.0	9.2	8.9	22.1
September-2021	5.9	5.9	20.6	20.6	8.7	8.7	11.8
October-2021	5.9	5.9	19.6	19.6	8.7	8.9	2.7
November-2021	5.9	5.9	-0.3	-0.3	8.7	8.9	2.7
December-2021	p 5.9	p 5.9	-p 3.5	-p 3.5	p 9.3	p 9.5	p 2.7

p: provisional

PPI Inflation for selected subgroups in the Manufacturing Sector

(Year-on-year change rates in %)



Ghana Statistical Service (GSS)

Table 10: Manufacturing: Monthly Change Rates for December 2020 - December 2021 (%)

Year / Month	Manufacturing	Manufacture of food products and beverages	Production, processing, preservation of meat, fish, fruit, vegetables, oils and fats	Manufacture of dairy products	Manufacture of grain mill products, starch products, and prepared animal feeds	Manufacture of other food products	Manufacture of beverages	Manufacture of textiles	Spinning, weaving and finishing of textiles
<i>ISIC</i>	D	D15	<i>D151</i>	<i>D152</i>	<i>D153</i>	<i>D154</i>	<i>D155</i>	D17	<i>D171</i>
<i>weight</i>	100	25.64	4.60	4.31	4.66	4.80	7.27	4.27	4.28
December-2020	0.6	2.3	2.5	5.6	0.3	2.8	0.0	0.1	0.1
January-2021	4.6	0.7	4.2	0.0	0.0	0.2	0.0	0.0	0.0
February-2021	0.5	0.4	0.4	0.0	2.2	-0.4	0.0	0.0	0.0
March-2021	0.7	-0.1	-0.4	0.0	0.0	-0.1	0.0	-0.1	-0.1
April-2021	-0.3	0.5	3.6	0.0	0.0	0.0	0.0	0.0	0.0
May-2021	2.0	4.7	34.9	0.0	0.0	0.0	0.0	0.1	0.1
June-2021	1.8	0.0	0.2	0.0	0.0	0.1	0.0	0.0	0.0
July-2021	0.2	-0.4	-2.8	0.0	0.0	0.2	0.0	0.0	0.0
August-2021	0.9	0.2	0.9	0.0	0.0	0.2	0.0	0.0	0.0
September-2021	1.1	0.6	3.6	0.0	0.0	0.1	0.0	2.2	2.2
October-2021	2.8	2.4	0.9	0.0	13.8	0.1	0.0	0.0	0.0
November-2021	3.6	0.4	2.4	0.0	0.2	0.1	0.0	5.7	5.7
December-2021	p -0.1	p 0.5	p 0.5	p 0.0	p 0.0	p 3.9	p 0.0	p 0.0	p 0.0

p: provisional

Table 10: Manufacturing: Monthly Change Rates for December 2020 - December 2021 (%)

contd.

Year / Month	Tanning of leather; manu facture of luggage, etc	Manufacture of footwear	Manufacture of wood an of articles of straw etc.	Sawmilling and planing of wood	Manufacture of products of wood, cork, straw etc.	Manufacture of paper and paper products	Manufacture of paper and paper products	Publishing, printing and reproduction of rec. media	Publishing	Printing and service activities ...
<i>ISIC</i>	D19	<i>D192</i>	D20	<i>D201</i>	<i>D202</i>	D21	<i>D210</i>	D22	<i>D221</i>	<i>D222</i>
<i>weight</i>	0.12	<i>0.12</i>	9.03	<i>4.94</i>	<i>4.10</i>	0.62	<i>0.62</i>	1.14	<i>0.40</i>	<i>0.74</i>
December-2020	0.0	0.0	0.0	0.0	0.2	0.3	0.3	0.0	0.0	0.0
January-2021	0.0	0.0	0.0	0.0	0.0	0.1	0.1	0.0	0.0	0.0
February-2021	7.1	7.1	0.1	0.0	0.2	4.6	4.6	0.0	0.0	0.0
March-2021	0.2	0.2	0.3	0.0	1.0	-0.1	-0.1	0.0	0.0	0.0
April-2021	0.0	0.0	0.0	0.0	0.0	0.1	0.1	0.0	0.0	0.0
May-2021	0.0	0.0	0.0	0.0	0.1	0.1	0.1	0.0	0.0	0.0
June-2021	0.0	0.0	0.2	0.0	0.6	3.2	3.2	0.0	0.0	0.0
July-2021	0.0	0.0	0.0	0.0	-0.1	0.1	0.1	0.0	0.0	0.0
August-2021	0.0	0.0	5.9	6.8	3.2	0.1	0.1	0.0	0.0	0.0
September-2021	5.9	5.9	2.3	2.1	2.9	0.1	0.1	0.0	0.0	0.0
October-2021	0.0	0.0	0.0	0.0	0.2	0.0	0.0	0.0	0.0	0.0
November-2021	0.0	0.0	0.0	0.0	0.1	6.4	6.4	0.0	0.0	0.0
December-2021	p 0.0	p 0.0	p -0.0	p 0.0	p -0.0	p 0.1	p 0.1	p 2.4	p 0.0	p 3.7

p: provisional

Table 10: Manufacturing: Monthly Change Rates for December 2020 - December 2021 (%)

contd.

Year / Month	Manufacture of coke, refined petroleum products etc.	Manufacture of refined petroleum products	Manufacture of chemicals and chemical products	Manufacture of basic chemicals	Manufacture of other chemical products	Manufacture of man-made fibres	Manufacture of rubber and plastics products	Manufacture of rubber products	Manufacture of plastics products
<i>ISIC</i>	D23	<i>D232</i>	D24	<i>D241</i>	<i>D242</i>	<i>D243</i>	D25	<i>D251</i>	<i>D252</i>
<i>weight</i>	22.94	<i>22.94</i>	10.15	<i>0.54</i>	<i>9.45</i>	<i>0.16</i>	3.90	<i>0.76</i>	<i>3.14</i>
December-2020	0.0	0.0	0.0	0.1	0.0	0.0	-0.3	-1.6	0.0
January-2021	15.9	15.9	0.0	0.4	0.0	0.0	0.1	0.4	0.0
February-2021	0.9	0.9	-0.2	0.0	-0.2	0.0	0.0	0.0	0.0
March-2021	0.7	0.7	0.2	-0.3	0.2	0.0	-1.1	-6.1	0.0
April-2021	-2.0	-2.0	0.0	0.0	0.0	0.0	0.0	0.0	0.0
May-2021	1.2	1.2	0.0	0.0	0.0	0.0	0.0	0.0	0.0
June-2021	5.9	5.9	0.0	0.2	0.0	0.0	8.1	6.0	8.5
July-2021	1.1	1.1	0.0	0.3	0.0	0.0	0.1	0.3	0.0
August-2021	0.1	0.1	0.4	0.4	0.4	0.0	0.1	0.7	0.0
September-2021	1.6	1.6	1.2	6.1	1.1	0.0	0.1	0.3	0.0
October-2021	8.6	8.6	0.0	0.2	0.0	0.0	0.1	0.2	0.0
November-2021	14.6	14.6	0.0	0.2	0.0	0.0	0.2	1.0	0.0
December-2021	p -1.3	p -1.3	p 0.0	p 0.3	p 0.0	p 0.0	p 0.1	p 0.4	p 0.0

p: provisional

Table 10: Manufacturing: Monthly Change Rates for December 2020 - December 2021 (%)
contd.

Year / Month	Manufacture of other non-metallic min. products	Manufacture of non-metallic mineral products n.e.c.	Manufacture of basic metals	Manufacture of basic iron and steel	Manufacture of basic precious and non-ferrous metals	Manufacture of fabricated metal products, ...	Manufacture of structural metal products, tanks, reservoirs ...	Manufacture of other fabricated metal products ...	Manufacture of machinery ... n.e.c.	Manufacture of special-purpose machinery
ISIC	D26	D269	D27	D271	D272	D28	D281	D289	D29	D292
weight	8.20	8.20	5.02	2.02	2.65	3.70	1.55	2.15	0.42	0.42
December-2020	0.0	0.0	0.0	-0.2	0.1	-0.2	0.0	-0.3	0.0	0.0
January-2021	6.8	6.8	1.7	3.7	0.3	0.0	0.0	0.1	0.0	0.0
February-2021	0.3	0.3	0.0	0.0	0.0	1.5	3.6	0.0	0.0	0.0
March-2021	1.7	1.7	9.1	22.5	-0.2	0.4	1.1	-0.1	0.0	0.0
April-2021	0.0	0.0	0.0	0.0	0.0	0.0	0.0	0.0	0.0	0.0
May-2021	0.0	0.0	7.3	17.8	0.0	2.3	0.0	4.0	10.6	10.6
June-2021	0.2	0.2	0.1	0.0	0.1	0.8	0.0	1.3	0.0	0.0
July-2021	0.0	0.0	0.1	0.0	0.2	0.1	0.0	0.2	0.0	0.0
August-2021	1.6	1.6	0.2	0.0	0.3	3.0	6.2	0.7	0.0	0.0
September-2021	1.6	1.6	0.1	0.0	0.2	0.1	0.0	0.1	0.0	0.0
October-2021	1.5	1.5	0.1	0.0	0.2	0.0	0.0	0.0	0.0	0.0
November-2021	0.0	0.0	0.1	0.0	0.2	0.0	0.1	0.0	0.0	0.0
December-2021	p 0.1	p 0.1	p 0.2	p 0.0	p 0.2	p 0.1	p 0.0	p 0.2	p 0.0	p 0.0

p: provisional

Table 10: Manufacturing: Monthly Change Rates for December 2020 - December 2021 (%)

contd.

Year / Month	Manufacture of electrical machinery and apparatus n.e.c.	Manufacture of insulated wire and cable	Manufacture of motor vehicles, trailers and semi-trailers	Manufacture of bodies for motor vehicles, trailers and semi-trailers	Manufacture of furniture; manufacturing n.e.c.	Manufacture of furniture	Manufacturing n.e.c.
<i>ISIC</i>	D31	<i>D313</i>	D34	<i>D342</i>	D36	<i>D361</i>	<i>D369</i>
<i>weight</i>	0.41	<i>0.41</i>	0.05	<i>0.05</i>	2.44	<i>2.33</i>	<i>0.11</i>
December-2020	0.0	0.0	3.0	3.0	0.4	0.4	0.0
January-2021	0.0	0.0	0.6	0.6	0.0	0.0	0.0
February-2021	0.0	0.0	-0.6	-0.6	4.6	4.7	0.9
March-2021	0.0	0.0	-2.1	-2.1	0.0	0.0	0.0
April-2021	0.0	0.0	0.8	0.8	0.0	0.0	0.0
May-2021	0.0	0.0	1.5	1.5	0.0	0.0	0.0
June-2021	0.0	0.0	-0.6	-0.6	0.3	0.3	0.0
July-2021	0.0	0.0	-1.3	-1.3	0.0	0.0	0.0
August-2021	5.9	5.9	0.2	0.2	3.2	3.3	0.8
September-2021	0.0	0.0	0.9	0.9	0.0	0.0	1.0
October-2021	0.0	0.0	-1.4	-1.4	0.0	0.0	0.0
November-2021	0.0	0.0	-1.2	-1.2	0.0	0.0	0.0
December-2021	p 0.0	p 0.0	p -0.3	p -0.3	p 0.9	p 0.9	p 0.0

p: provisional

Table 11: Utilities: Producer Price Index (Sept 2006=100) for December 2020 - December 2021

Year / Month	Electricity and water supply (Utilities)	Electricity supply	Production, transmission and distribution of electricity	Water supply	Collection, purification and distribution of water
<i>ISIC</i>	<i>E</i>	<i>E40</i>	<i>E401</i>	<i>E41</i>	<i>E410</i>
<i>weight</i>	100.00	93.25	93.25	6.75	6.75
December-2020	899.2	897.7	897.7	921.1	921.1
January-2021	899.5	898.0	898.0	921.1	921.1
February-2021	899.5	898.0	898.0	921.1	921.1
March-2021	899.2	897.7	897.7	921.1	921.1
April-2021	899.3	897.8	897.8	921.1	921.1
May-2021	899.3	897.8	897.8	921.1	921.1
June-2021	899.4	897.9	897.9	921.1	921.1
July-2021	899.7	898.2	898.2	921.1	921.1
August-2021	900.0	898.5	898.5	921.1	921.1
September-2021	900.2	898.8	898.8	921.1	921.1
October-2021	900.4	899.0	899.0	921.1	921.1
November-2021	900.6	899.2	899.2	921.1	921.1
December-2021	p 900.9	p 899.5	p 899.5	p 921.1	p 921.1

p: provisional

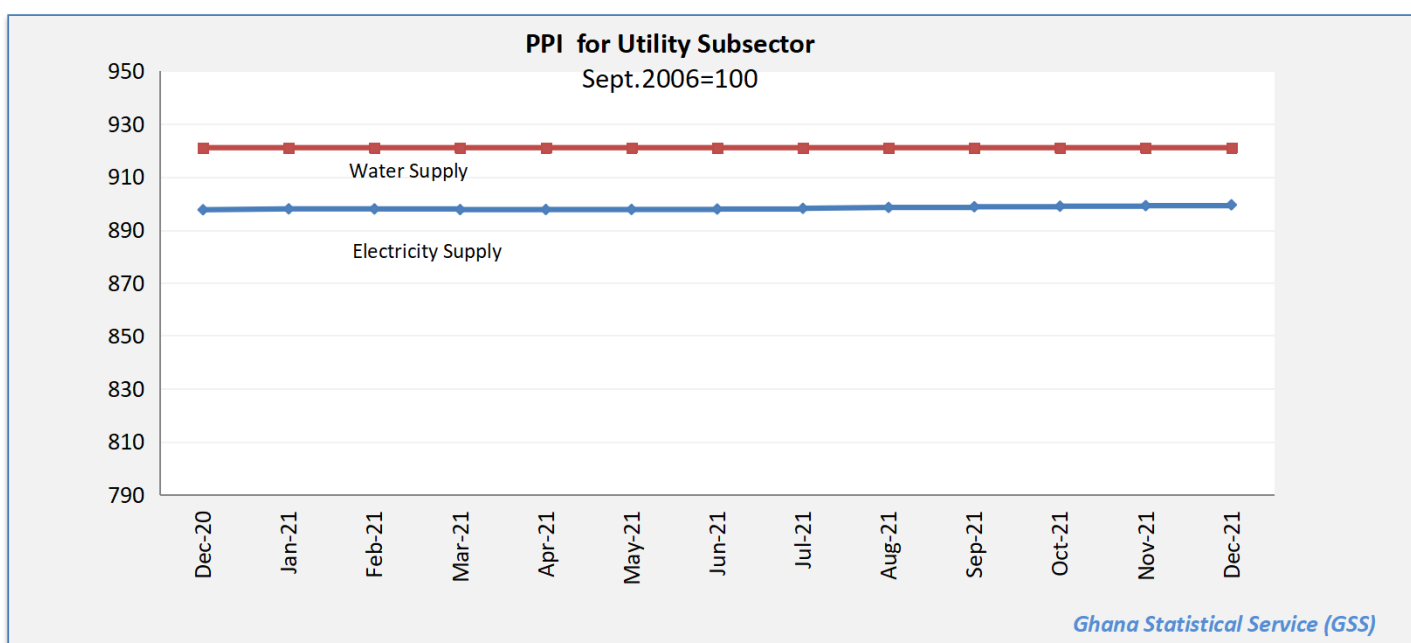


Table 12: Utilities: Yearly Change Rates for December 2020 - December 2021 (%)

Year / Month	Electricity and water supply (Utilities)	Electricity supply	Production, transmission and distribution of electricity	Water supply	Collection, purification and distribution of water
<i>ISIC</i>	<i>E</i>	<i>E40</i>	<i>E401</i>	<i>E41</i>	<i>E410</i>
<i>weight</i>	100.00	93.25	93.25	6.75	6.75
December-2020	0.2	0.2	0.2	0.0	0.0
January-2021	0.3	0.3	0.3	0.0	0.0
February-2021	0.4	0.4	0.4	0.0	0.0
March-2021	0.3	0.4	0.4	0.0	0.0
April-2021	0.2	0.2	0.2	0.0	0.0
May-2021	0.1	0.1	0.1	0.0	0.0
June-2021	0.1	0.1	0.1	0.0	0.0
July-2021	0.1	0.1	0.1	0.0	0.0
August-2021	0.1	0.1	0.1	0.0	0.0
September-2021	0.1	0.2	0.2	0.0	0.0
October-2021	0.2	0.2	0.2	0.0	0.0
November-2021	0.2	0.2	0.2	0.0	0.0
December-2021	p 0.2	p 0.2	p 0.2	p 0.0	p 0.0

p: provisional

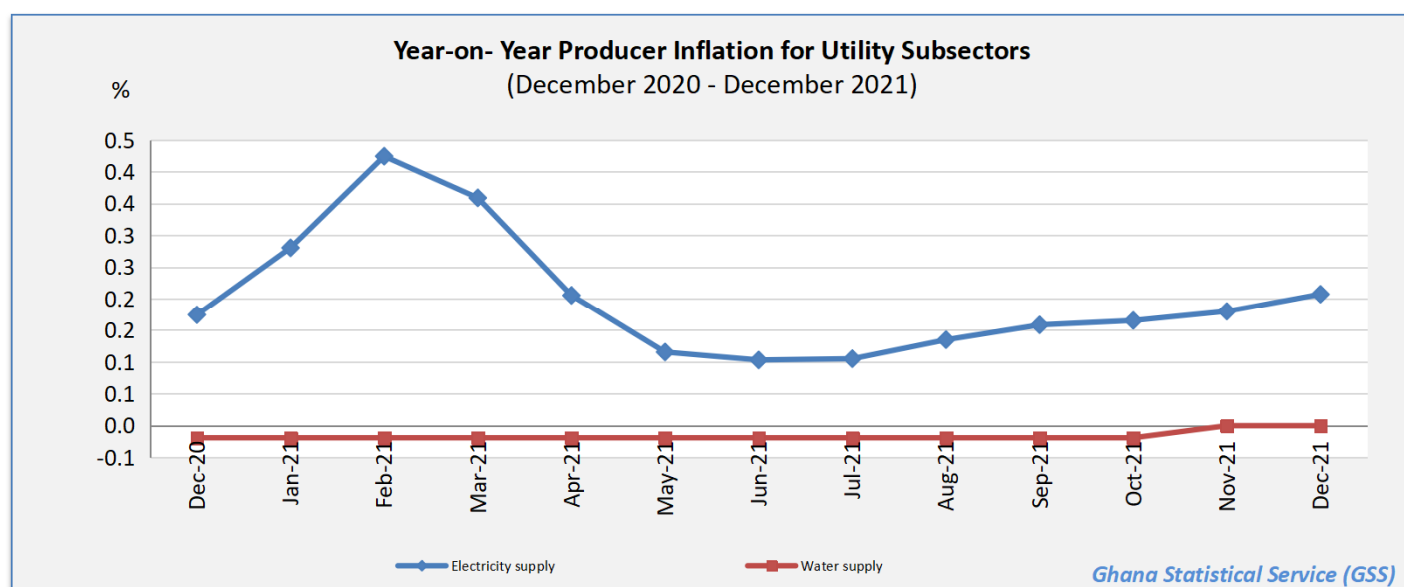


Table 13: Utilities: Monthly Change Rates for December 2020 - December 2021 (%)

Year / Month	Electricity and water supply (Utilities)	Electricity supply	Production, transmission and distribution of electricity	Water supply	Collection, purification and distribution of water
<i>ISIC</i>	<i>E</i>	<i>E40</i>	<i>E401</i>	<i>E41</i>	<i>E410</i>
<i>weight</i>	100.00	93.25	93.25	6.75	6.75
December-2020	0.0	0.0	0.0	0.0	0.0
January-2021	0.0	0.0	0.0	0.0	0.0
February-2021	0.0	0.0	0.0	0.0	0.0
March-2021	0.0	0.0	0.0	0.0	0.0
April-2021	0.0	0.0	0.0	0.0	0.0
May-2021	0.0	0.0	0.0	0.0	0.0
June-2021	0.0	0.0	0.0	0.0	0.0
July-2021	0.0	0.0	0.0	0.0	0.0
August-2021	0.0	0.0	0.0	0.0	0.0
September-2021	0.0	0.0	0.0	0.0	0.0
October-2021	0.0	0.0	0.0	0.0	0.0
November-2021	0.0	0.0	0.0	0.0	0.0
December-2021	p 0.0	p 0.0	p 0.0	p 0.0	p 0.0

p: provisional

